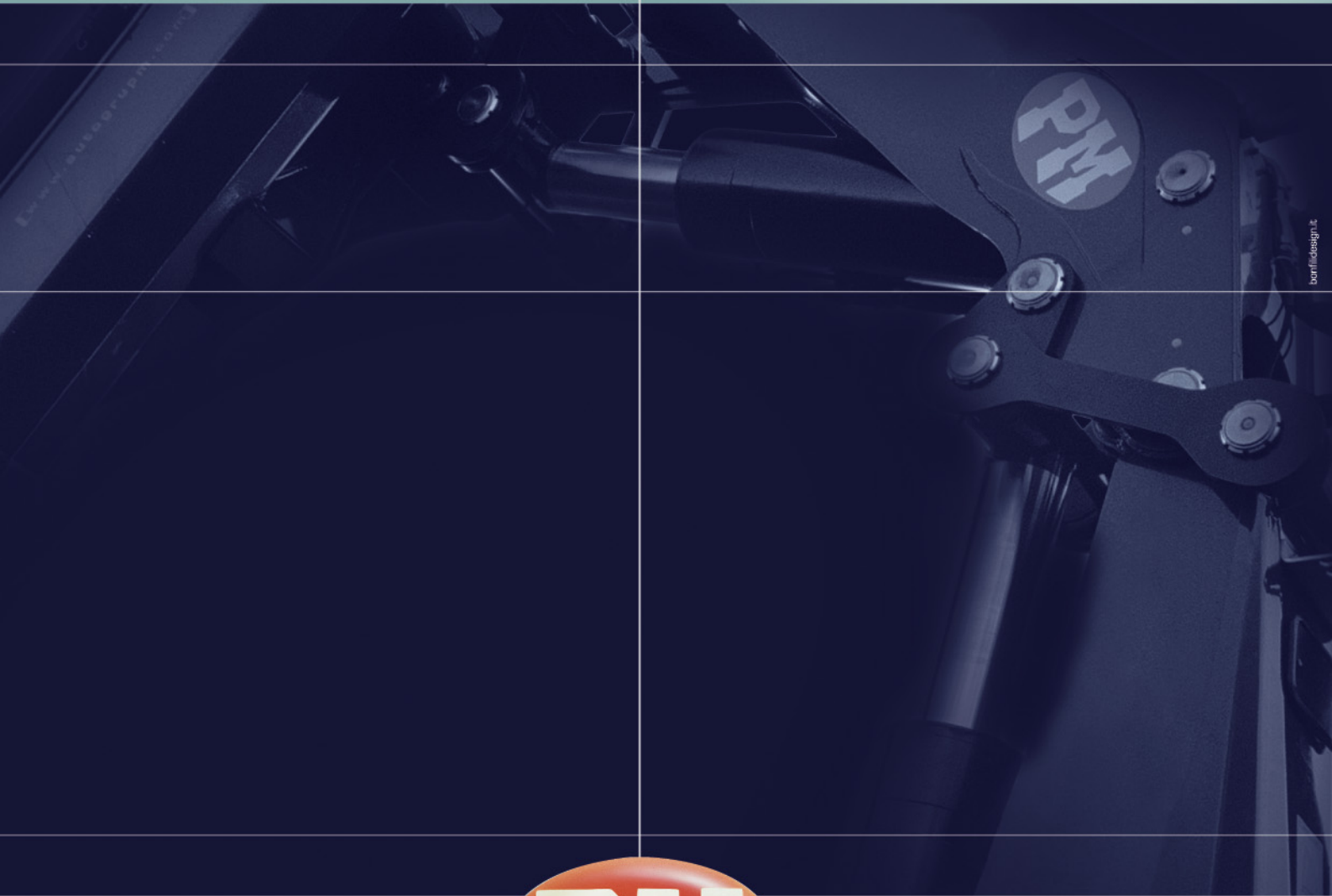


[43] PM

[43] PM

SILVER

SILVER



[elevate to the highest power] PM

Brought to you by:
American PM Crane Imports Inc.
Phone# (877) MY-PM-CRANE
(877) 697-6272
Or# (407) 246-1642
Dealer Inquiries Welcome:
Email: Corplnq@PMCranes.Com

Cod. 836.991 E.D. '06



[elevate to the highest power] PM

[43] PM

[LIA]

PQS

[3]

3 ANNI DI GARANZIA SULLE PARTI STRUTTURALI
3 YEARS OF WARRANTY ON THE STRUCTURAL PARTS
3 ANS DE GARANTIE SUR LES PARTIES STRUCTURELLES
3 JAHRE GARANTIE AUF STRUKTURBAUTEILE
3 AÑOS DE GARANTÍA POR LAS PARTES STRUCTURALES

DICHIARAZIONE DI CONFORMITÀ DEL PRODUTTORE
DECLARATION OF CONFORMITY OF THE MANUFACTURER
DECLARATION DE CONFORMITE DU PRODUCTEUR
KONFORMITÄTSEKLRÄRUNG DES HERSTELLERS
DECLARACIÓN DE CONFORMIDAD DEL PRODUCTOR

SISTEMA DI VERNICIATURA DI QUALITÀ CERTIFICATA
CERTIFIED PAINTING QUALITY SYSTEM
SYSTEME DE VERNISSAGE DE QUALITÄTE CERTIFIÉE
ZERTIFIZIERTES QUALITÄTS-LACKIERSYSTEM
SISTEMA DE BARNIZADO DE CALIDAD CERTIFICADA

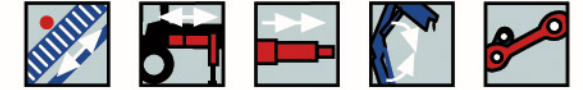
- Disponibile fino a 6 sfili idraulici
- Up to 6 hydraulic extensions available
- Jusqu'à 6 coulisses hydrauliques
- Bis zu 6 hydraulische Ausschübe erhältlich
- Disponible hasta 6 extensiones hidráulicas

- Uscita sequenziale sfilo bracci
- Extention sequence boom
- Sortie vérin télescopique en séquence
- Ausschubzylinder-Sequenz
- Salida secuencial de los brazos

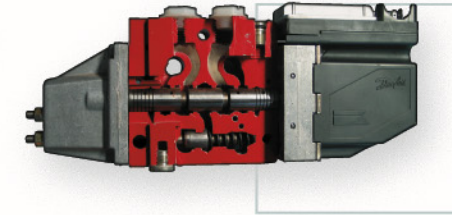
- Antenna a 2, 3 e 4 sfili su gru versione 4 e 5 sfili
- Jib with 2, 3 and 4 extensions on 4 and 5 extension crane version
- Jib à 2, 3 et coulisses sur grue version 4 et 5 coulisses
- Jib mit 2, 3 und 4 Ausschüben in der Kranversion mit 4 und 5 Ausschüben
- Jib con 2, 3 y 4 extensiones en la grúa del model con 4 y 5 extensiones

- Prolunghe manuali su gru ed antenna con dispositivo LMU (opt)
- Manual extensions on crane and jib with LMU device (opt)
- Rallonges manuelles sur grue et antennes avec dispositif LMU (opt)
- Manuelle Verlängerungen am Kran und Zusatzknickarm mit LMU-Vorrichtung (opt)
- Prolongas manuales sobre la grúa y antenas con dispositivo LMU (opt)

ACCESSORI - ACCESSORIES - ACCESSOIRE - ACCESSORIOS - ZUBEHÖRE



Radiocomando multifunzione Scanreco/Hetronic.
Scanreco/Hetronic multifunction radio control.
Radiocommande multifonctions Scanreco/Hetronic.
Multifunktions-Fernbedienung Scanreco/Hetronic.
Radiocontrol multifunción Scanreco/Hetronic.



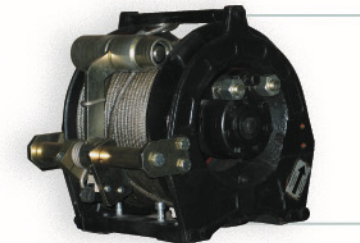
Distributore proporzionale DANFOSS.
Danfoss proportional hydraulic control valve block.
Distributeur hydraulique proportionnel Danfoss.
Proportionaler Steuerventilblock Danfoss.
Distribuidor hidráulico proporcional Danfoss.



Scambiatore di calore
Heat exchanger
Wärmetauscher
Échangeur de chaleur
Cambiador de calor



Posto di manovra in piedi: massimo angolo di visibilità.
Raised control station: maximum angle of visibility
Poste de manoeuvre debout: angle maximum de visibilité.
Steuer-Stehplatz Optimal weiter Blickwinkel.
Puesto de maniobra en pie: máximo ángulo de visibilidad.



Verricello idraulico da 1500 kg su antenna, fino a 2000 Kg su gru.
Hydraulic winches with a capacity ranging from 1500 kg on jibs, up to 2000 kg on crane.
Treuil hydraulique de 1500 kg sur fléchette, jusqu'à 2000 kg sur la grue.
Hydraulische Winden von 1500 kg (Jib), bis 2000 kg (Kran)
Cabrestantes hidráulicos de 1500 kg en Jib, a 2000 kg en grúa

Attivazioni alimentate con avvolgitubi
Activations powered by means of hose winder
Commandes alimentées avec enrouleurs de tuyaux
Aktivierungen mit Speisung über Schlauchwinden
Activaciones alimentadas con arrolladores de tubos



EN12999

CONFORME ALLE NORME DI SICUREZZA EU
IN ACCORDANCE TO THE EU SAFETY STANDARDS
CONFORME AUX NORMES DE SECURITE EU
GEMÄß EU SICHERHEITSRICHTLINIEN
CONFORME CON LAS NORMAS DE SEGURIDAD EU

Cremagliera
Slewing by rack
Rotation avec crémaillère
Schwenkung mittels Zahnstange
Rotación con cremallera de giro

Mono biella
Single connecting rod
Doubles biellettes sur une articulation
Kniehebel
Biela Simple

Bracci stabilizzatori a sfilo idraulico
Hydraulic outrigger booms
Bras stabilisateur à extension hydraulique
Hydraulischer Abstützausschub
Brazos estabilizadores a salida hidráulica

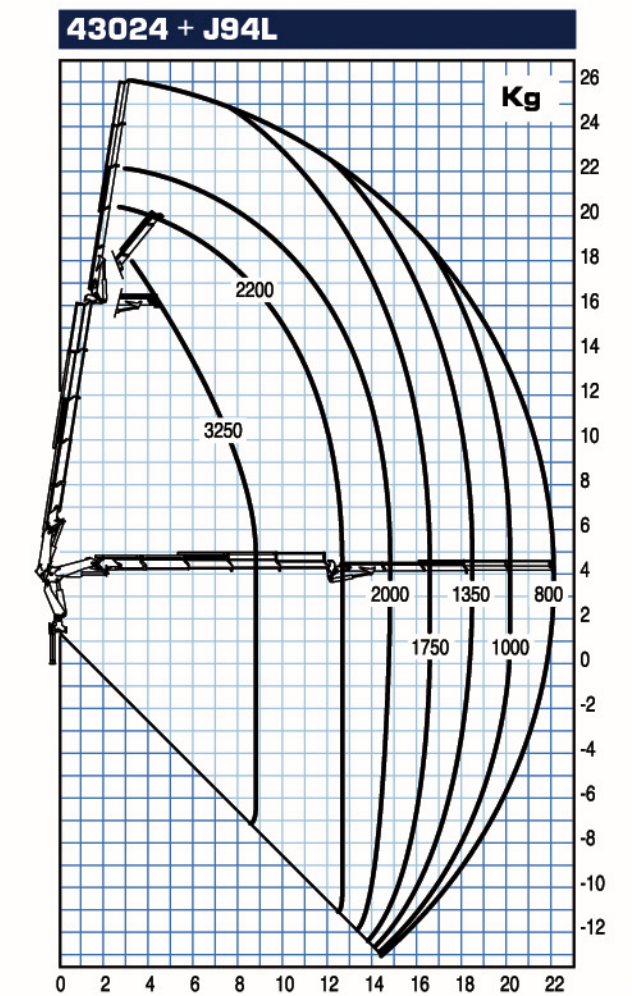
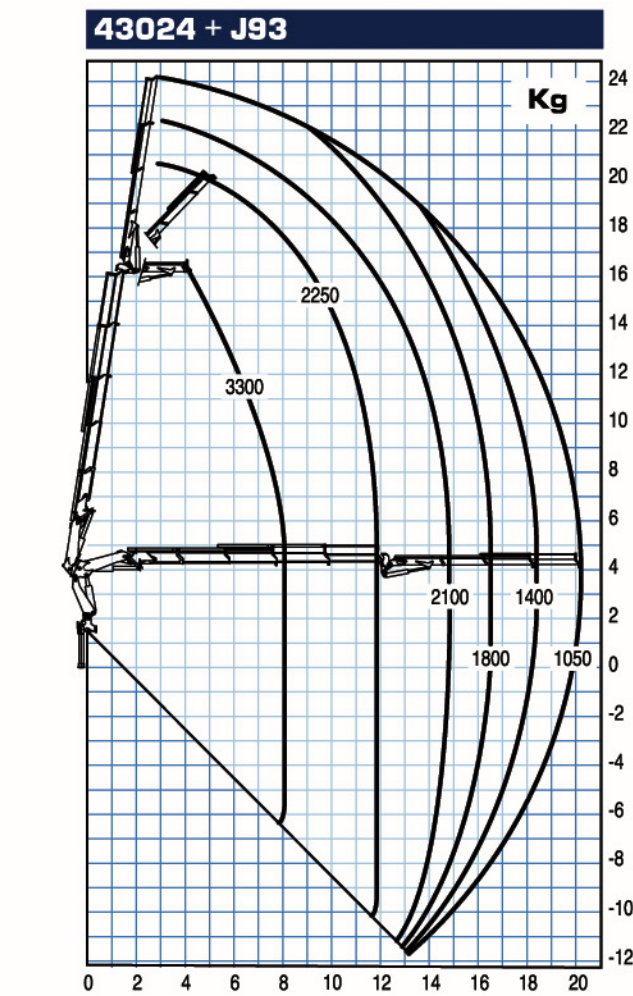
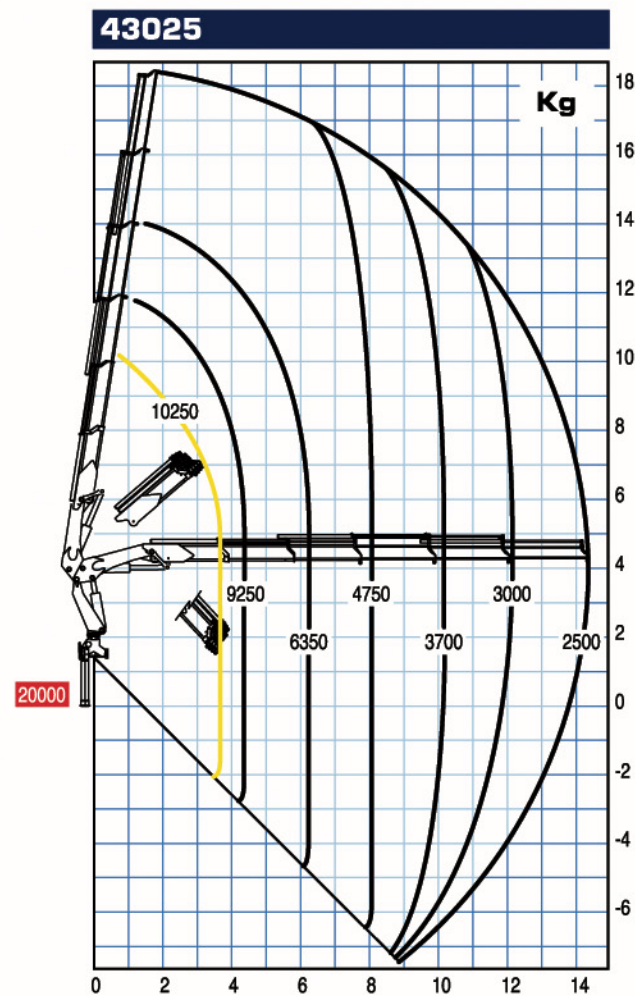
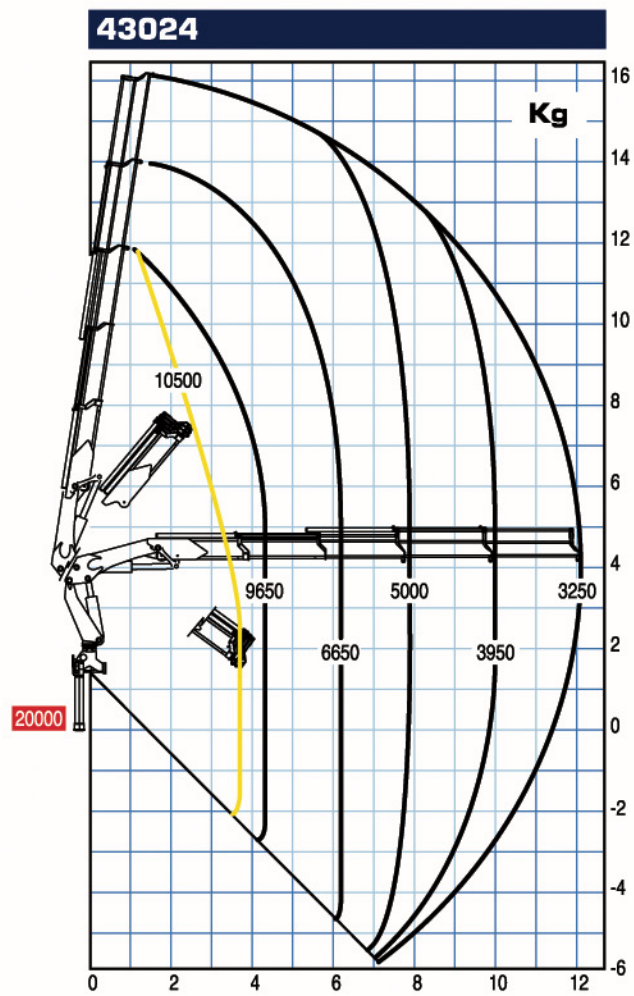
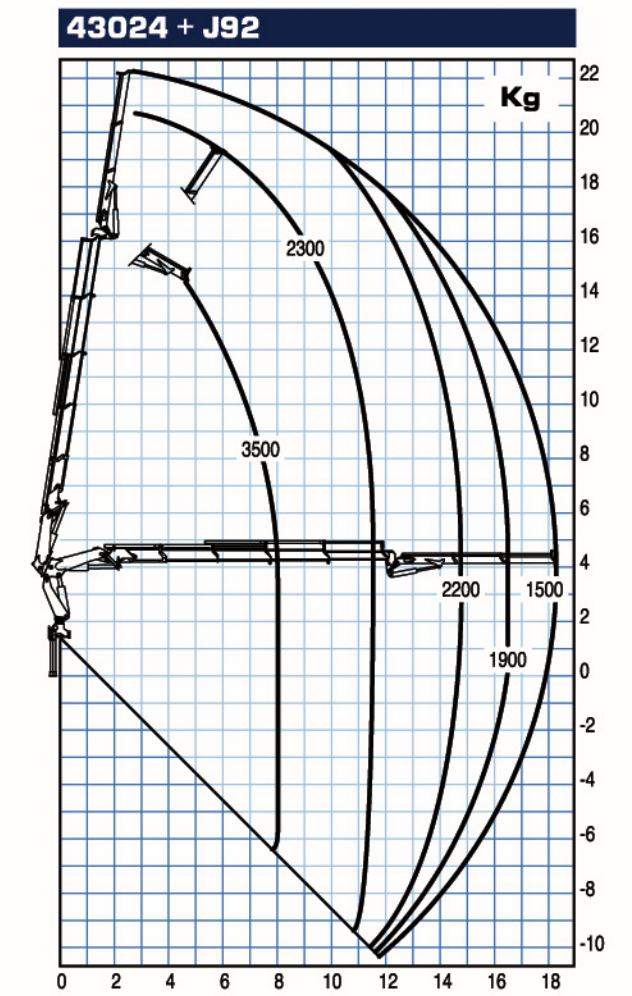
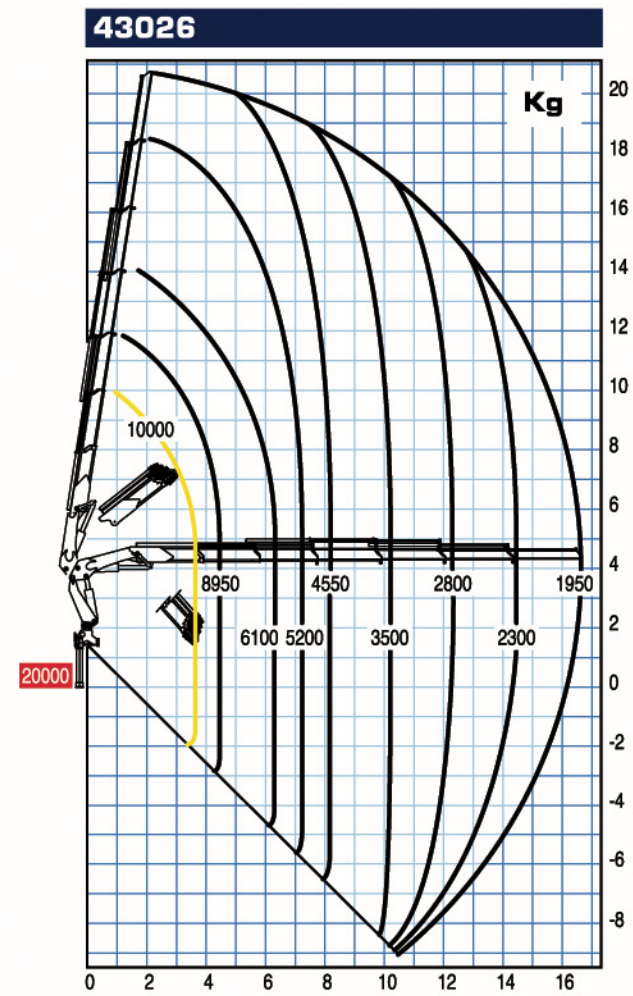
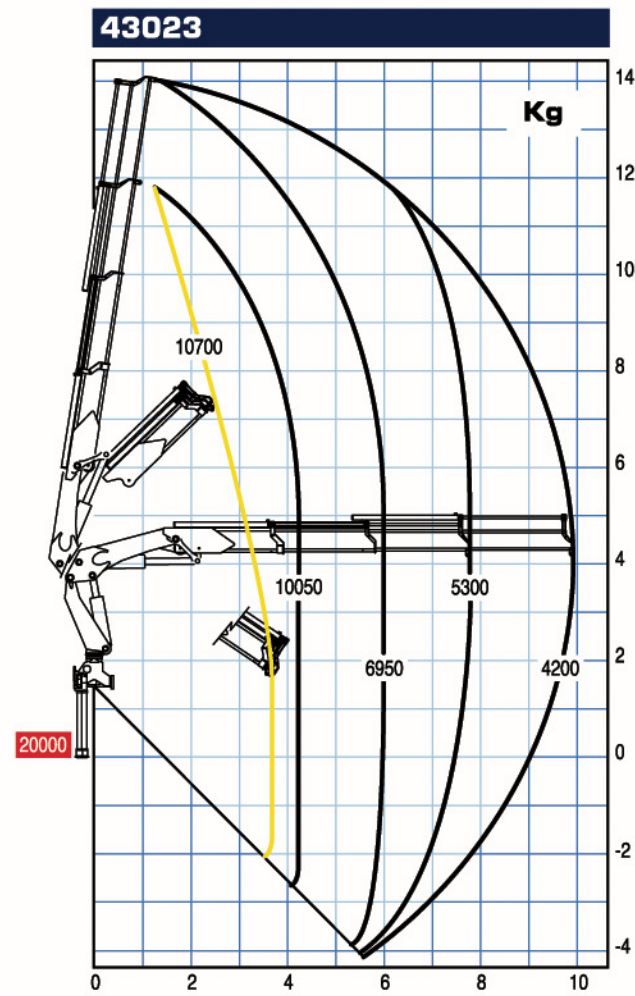
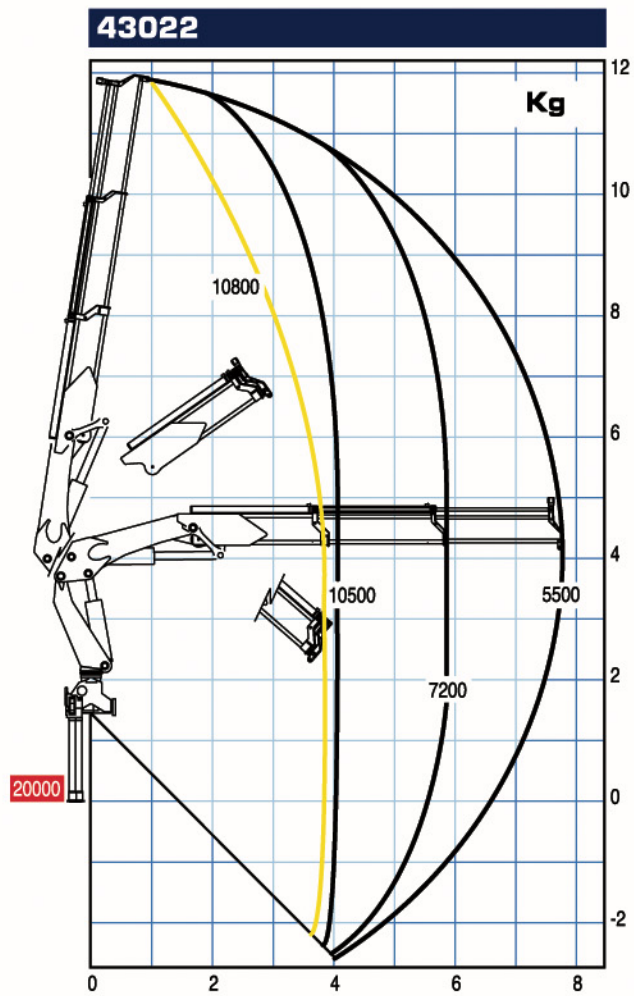
Uscita sequenziale sfilo bracci
Extention sequence boom
Sortie vérin télescopique en séquence
Ausschubzylinder-Sequenz
Salida secuencial de los brazos

Kit valvola di blocco rotazione
Slewing valve
Soupape d'arrêt rotation
Drehventil
Kit bloqueo de rotación

- Bracci stabilizzatori a sfilo idraulico allargabili fino a 7,3 m
- Stabilizers with hydraulic extension, extendable up to 7,3 m
- Bras stabilisateurs à coulisse hydraulique, élargissable jusqu'à 7,3 m
- Stützarme mit hydraulischem Ausschub, ausziehbar bis auf 7,3 m
- Brazos estabilizadores con extensión hidráulica que ofrecen un alcance máximo de 7,3 m

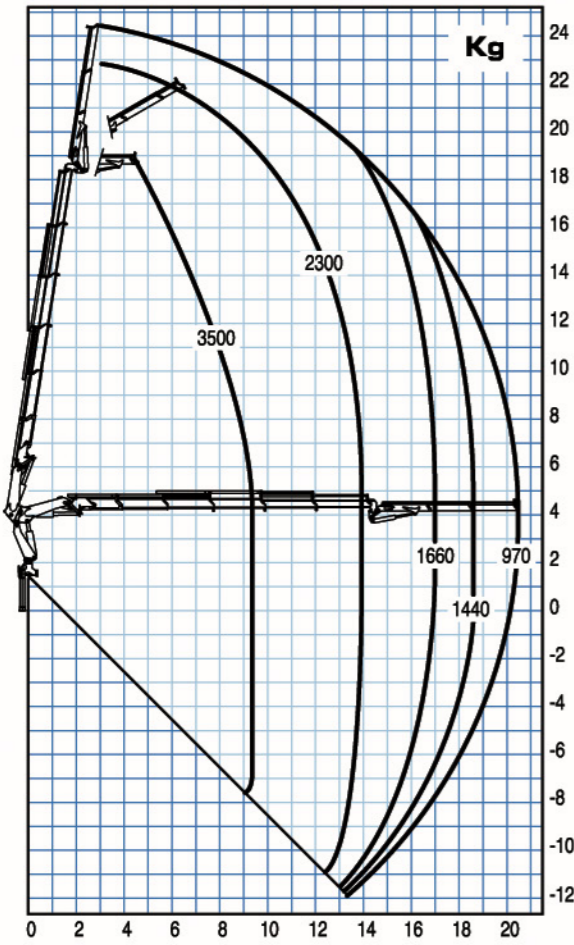


SILVER

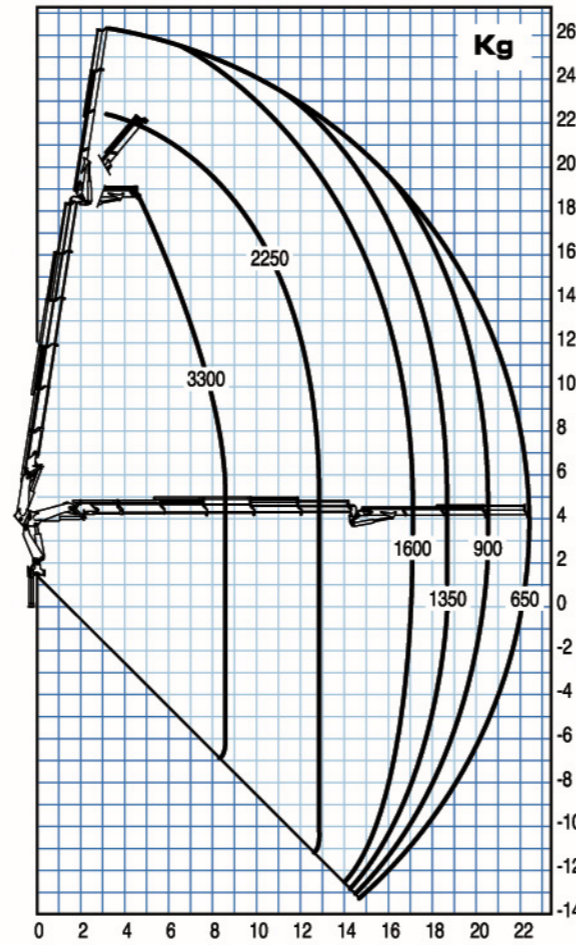


— Portata massima passante per l'orizzontale - Max. capacity from horizontal to vertical - Capacité maxi passant par l'horizontale - Max. Tragkraft von horizontal bis zu vertical - Capacidad máxima en posición vertical
— Portata massima nominale al gancio fisso - Max. nominal capacity with fixed hook - Capacité maxi nominale au crochet fixe - Max. Nenntragkraft an der inneren Hakenbefestigung - Capacidad máxima en el gancho fijo

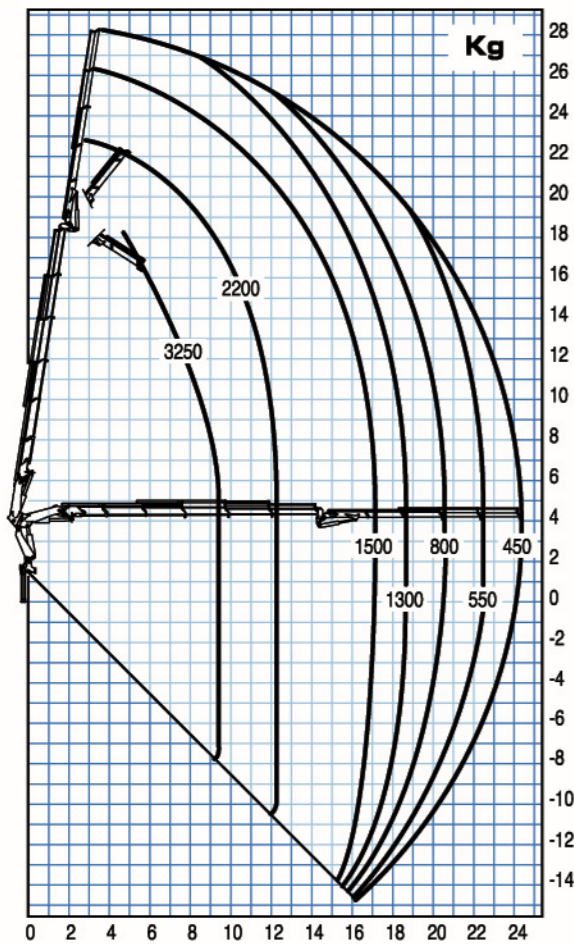
43025 + J92



43025 + J93



43025 + J94L



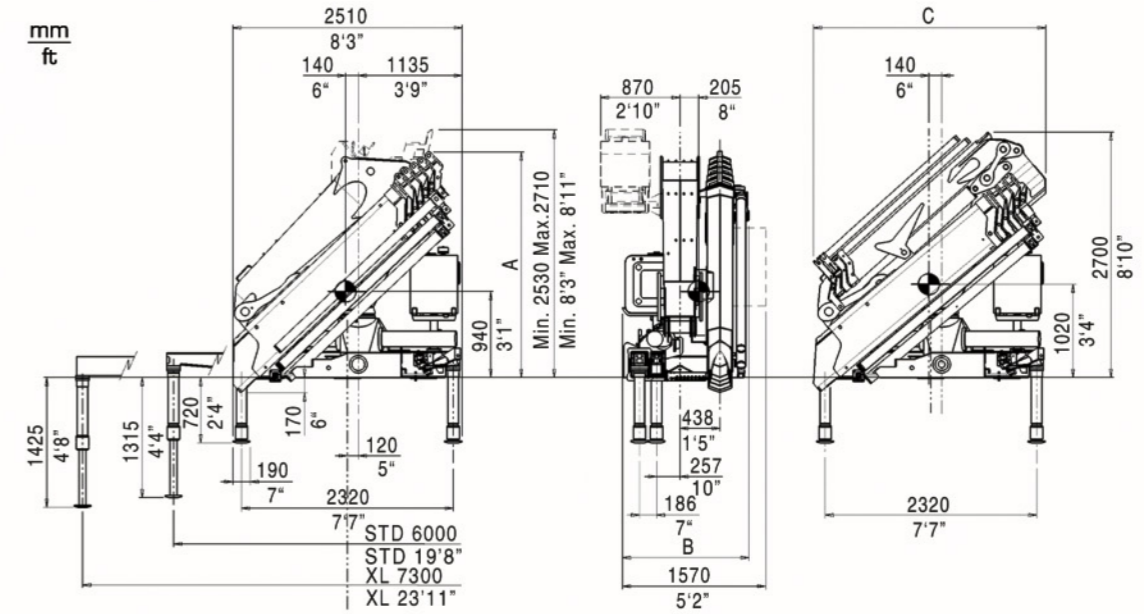
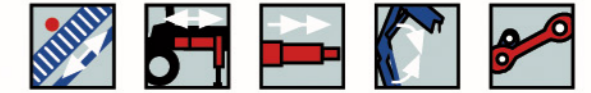
Tutte le gru PM sono coperte da polizza assicurativa internazionale per la responsabilità verso terzi.
All PM Cranes are covered by international insurance policy for civil liability third party.
Toutes les grues sont couvertes par une police d'assurance internationale de responsabilité civile envers tiers.
PM-Kränes sind durch eine internationale haftpflichtversicherung gegen dritte abgesichert.
Todas las grúas PM cuentan con una póliza de seguros internacional contra las responsabilidades civiles hacia terceros.

I dati tecnici possono essere aggiornati senza preavviso.
Technical data can be revised without prior notice.
Les données techniques peuvent être modifiées sans préavis.
Technische Änderungen vorbehalten.
Reservado el derecho de modificaciones.

Abbinamento gru/veicolo - Trucking crane combination
Accouplement grue/véhicule Acoplamiento grúa con vehículo
Kran zusammen mit LKW

- | | | |
|------------|----|------------------|
| PTT/G.V.W. | 43 | 4 stabilizzatori |
| 26,0 ton | | 4 outriggers |
| 32,0 ton | | 4 stabilisateurs |
| 44,0 ton | | 4 abstützungen |
| | | 4 gatos de apoyo |

PTT: Peso totale a terra - G.V.W. - P.T.A.C. - Peso total del vehículo LKW Gesamtgewicht



	43022	43023	43024	43025	43026
A (mm)	2415	2415	2415	2415	2465
A (ft)	7'11"	7'11"	7'11"	7'11"	8'1"
B (ft)	1335	1335	1385	1385	1385
B (ft)	4'4"	4'4"	4'6"	4'6"	4'6"

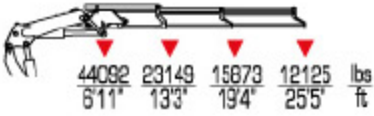
	43024+J92	43024+J93	43024+J94L	43025+J92	43025+J93	43025+J94L
C (mm)	2540	2550	2600	2540	2550	2600
C (ft)	8'4"	8'4"	8'6"	8'4"	8'4"	8'6"

	43022	43023	43024	43025	43026	43024+J92	43024+J93	43024+J94L	43025+J92	43025+J93	43025+J94L
Momento di sollevamento massimo - Maximum lifting moment - Moment de levage maxi - Max. Lastmoment - Momento del elevación máxima	tm	42,6	41,7	41,0	40,2	39,8	-	-	-	-	-
	kNm	418	409	402	394	390	-	-	-	-	-
Sbraccio oleodinamico - Maximum hydraulic reach - Allongement hydraulique - Hydraulische reichweite, Standard - Alcance hidráulico	m	7,95	10,10	12,25	14,55	16,85	18,50	20,40	22,30	20,70	22,60
orizzontale - horizontal - horizontal - horizontal - vertical - vertical - vertical - vertical - vertical	m	11,50	13,60	15,80	17,90	20,40	21,90	23,80	25,70	24,10	26,00
Sbraccio con prolunghe - Maximum reach with manual extensions - Allongement avec rallonges manuelles - Reichweite, manuelle Verlängerungen - Alcance con prolongas manuales	m	-	-	20,50	22,40	22,40	-	26,10	26,00	-	28,30
orizzontale - horizontal - horizontal - horizontal - vertical - vertical - vertical - vertical - vertical	m	-	-	23,90	25,40	25,40	-	29,50	29,40	-	31,70
Impianto oleodinamico - Hydraulic system - Circuit hydraulique - Hydraulikanlage - Sistema hidráulico portata raccomandata - recommended oil flow débit recommandé - empfohlene Fördermenge caudal requerido	l/min	50	50	50	50	50	50	50	50	50	50
pressione massima - rated pressure - pression maxi - betriebsdruck - presión máxima	Mpa	27,5	27,5	27,5	27,5	27,5	27,5	27,5	27,5	27,5	27,5
capacità del serbatoio - tank capacity - capacité du réservoir - tankinhalt - capacidad del depósito de aceite	l	200	200	200	200	200	200	200	200	200	200
Gruppo di rotazione - Slewing system - Rotation - Schwenksystem - Sistema de giro	°	385	385	385	385	385	385	385	385	385	385
coppia di rotazione - slewing moment - couple de rotation - schwenkmoment - momento de giro	kNm	46	46	46	46	46	46	46	46	46	46
pendenza massima di lavoro - max. working heel - devers maxi de travail - maxi arbeitsneigung - inclinación máxima de trabajo	%(°)	8,7(5)	8,7(5)	8,7(5)	8,7(5)	8,7(5)	0	0	0	0	0
Peso della gru standard - Standard crane weight - Poids de la grue standard - Eigengewicht - Peso de la grúa est.	kg	4360	4610	4850	5090	5290	5420	5530	5610	5660	5770
Con serbatoio non rifornito - Empty oil tank - réservoir huile non garni - oeltank leer - depósito de aceite vacío	kg	4360	4610	4850	5090	5290	5420	5530	5610	5660	5770

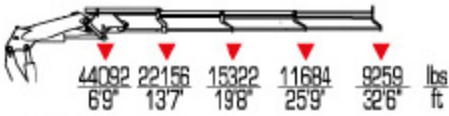
[43]



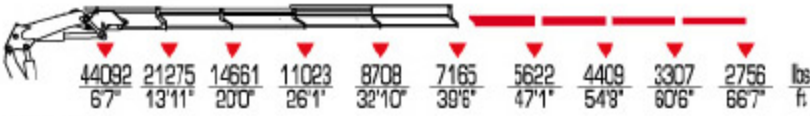
43022



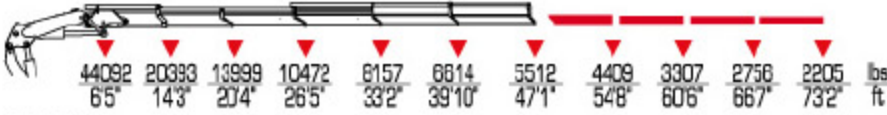
43023



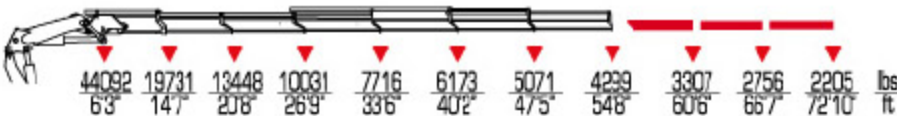
43024



43025



43026



43024 + J92



43024 + J93



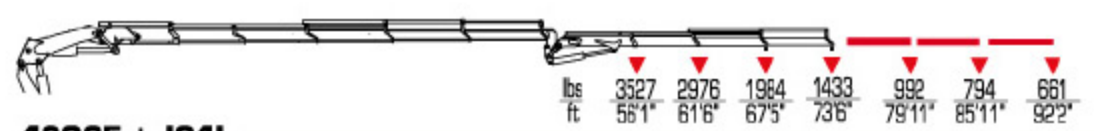
43024 + J94L



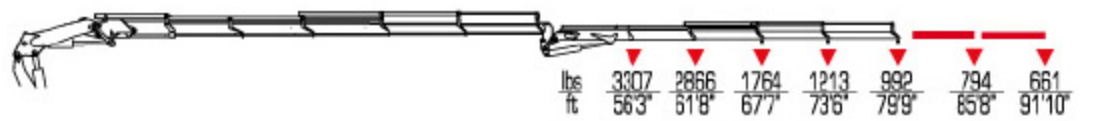
43025 + J92










43025 + J93



43025 + J94L



	 ft lbs	 gals /min	Psi	 °	 lbs ST				
43022	308130	13	3990	385	9612	8'3"	7'11"	4'4"	43022
43023	301620	13	3990	385	10163	8'3"	7'11"	4'4"	43023
43024	296550	13	3990	385	10692	8'3"	7'11"	4'6"	43024
43025	290770	13	3990	385	11222	8'3"	7'11"	4'6"	43025
43026	287870	13	3990	385	11662	8'3"	8'1"	4'6"	43026
43024 + J92	-	13	3990	385	11949	8'4"	8'10"	5'2"	43024 + J92
43024 + J93	-	13	3990	385	12192	8'4"	8'10"	5'2"	43024 + J93
43024 + J94L	-	13	3990	385	12368	8'6"	8'10"	5'2"	43024 + J94L
43025 + J92	-	13	3990	385	12478	8'4"	8'10"	5'2"	43025 + J92
43025 + J93	-	13	3990	385	12721	8'4"	8'10"	5'2"	43025 + J93
43025 + J94L	-	13	3990	385	12897	8'6"	8'10"	5'2"	43025 + J94L

SILVER

SILVER